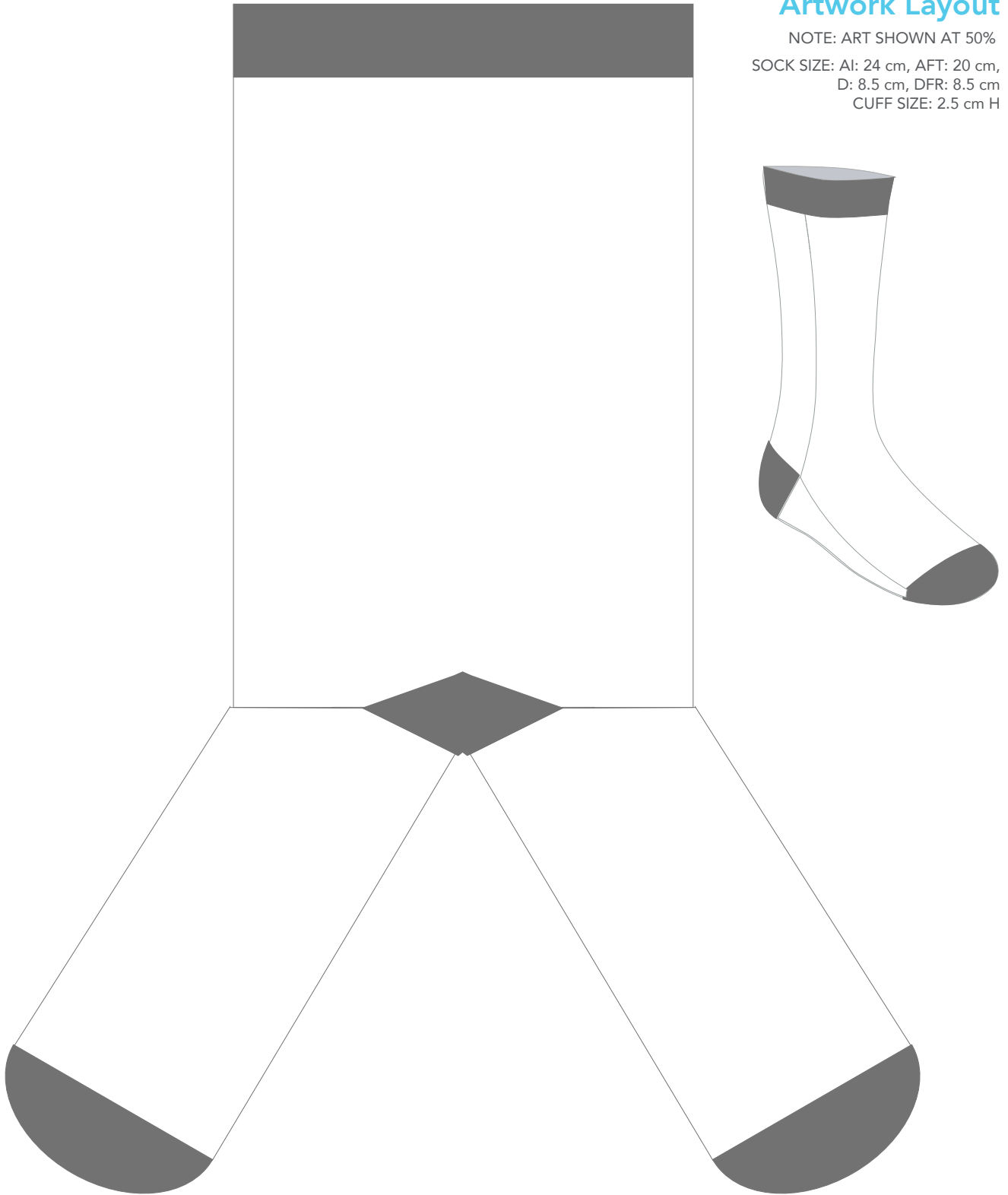


# ATHLETIC SOCKS - NON-RIBBED

## Artwork Layout

NOTE: ART SHOWN AT 50%  
SOCK SIZE: AI: 24 cm, AFT: 20 cm,  
D: 8.5 cm, DFR: 8.5 cm  
CUFF SIZE: 2.5 cm H



# ATHLETIC SOCKS - NON-RIBBED

## Flat Artwork Layout

NOTE: ART SHOWN AT 50%

SOCK SIZE: AI: 24 cm, AFT: 20 cm,  
D: 8.5 cm, DFR: 8.5 cm  
CUFF SIZE: 2.5 cm H



\*\*Dotted line shows where the heel is placed in the design. Make sure all full art is above of below that line.

# ATHLETIC SOCKS - NON-RIBBED

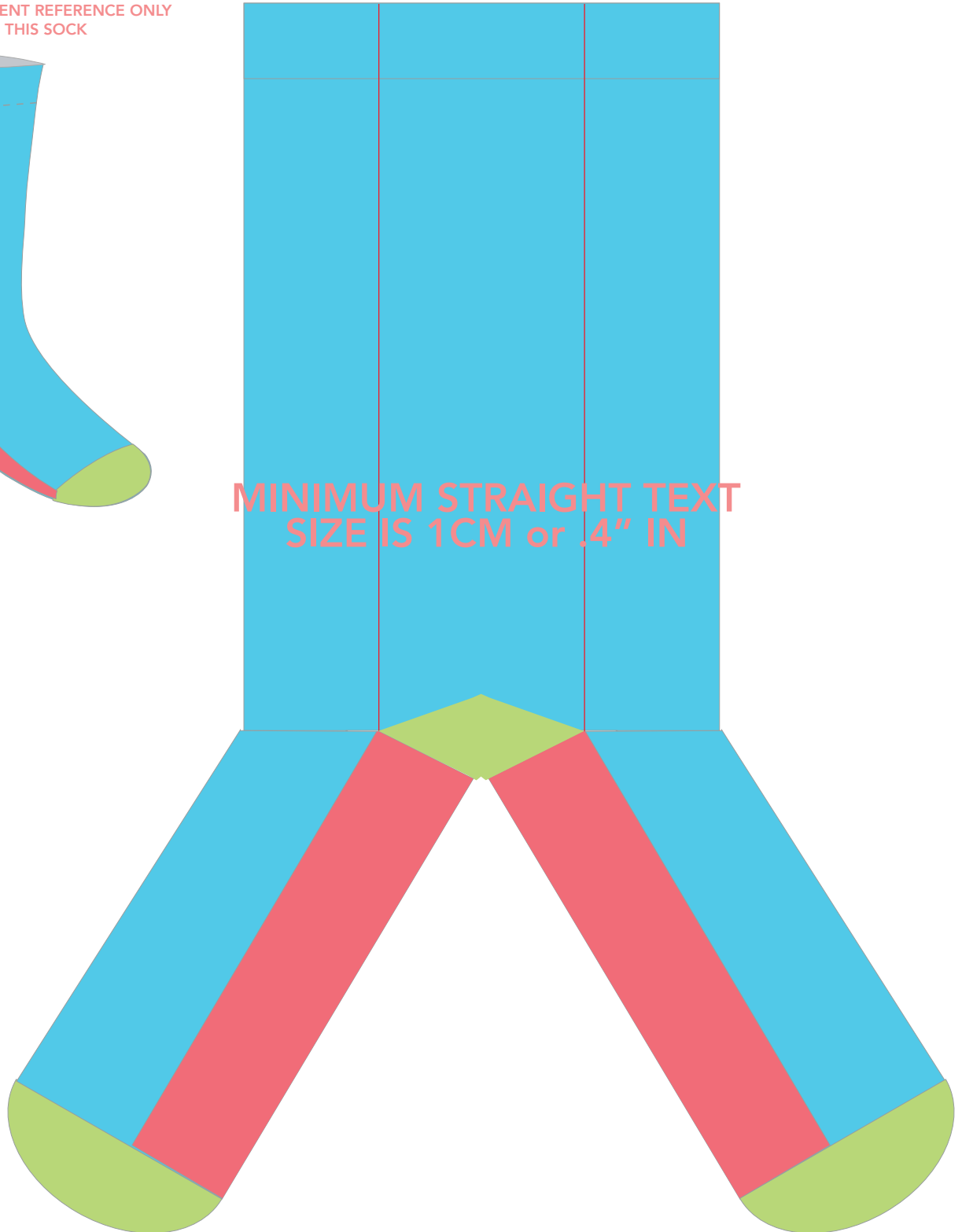
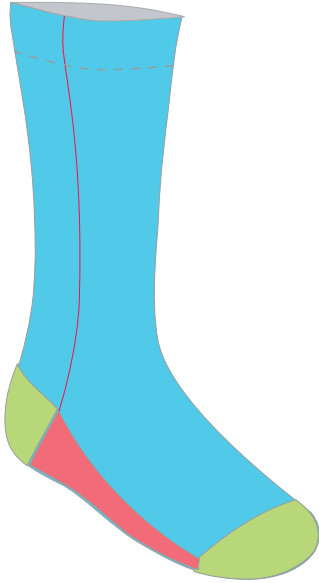
## HOW TO USE

1. Use the reference sock to understand what each part of the template represents.
2. Please ensure your design is continuous around the entire sock. Keep in mind the sock is a tube.
3. Please limit your design to 6 total colors (3 PMS matched, 3 closest matches)  
NOTE: Toe, heel and cuff colors are included in the 6 colors.
4. Use the guide in the reference sock and template to ensure your designs meet minimum text and line size.
  - All text that is straight must be at least .4" IN or 1 CM in height.
  - Diagonal text must be a minimum of .6" IN or 1.5 CM in height.
  - Lines must be at least .062" IN or .15 CM in width.
5. The toes and heel cannot be printed on.
6. The cuff can be printed, however, more spandex is used in the knitting process in the cuff which results in some distortion of any printing within it.

# ATHLETIC SOCKS - NON-RIBBED

## REFERENCE GUIDE

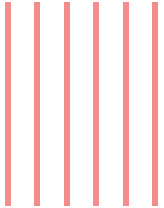
SOCK FOR TEMPLATE PLACEMENT REFERENCE ONLY  
DO NOT DESIGN IN THIS SOCK



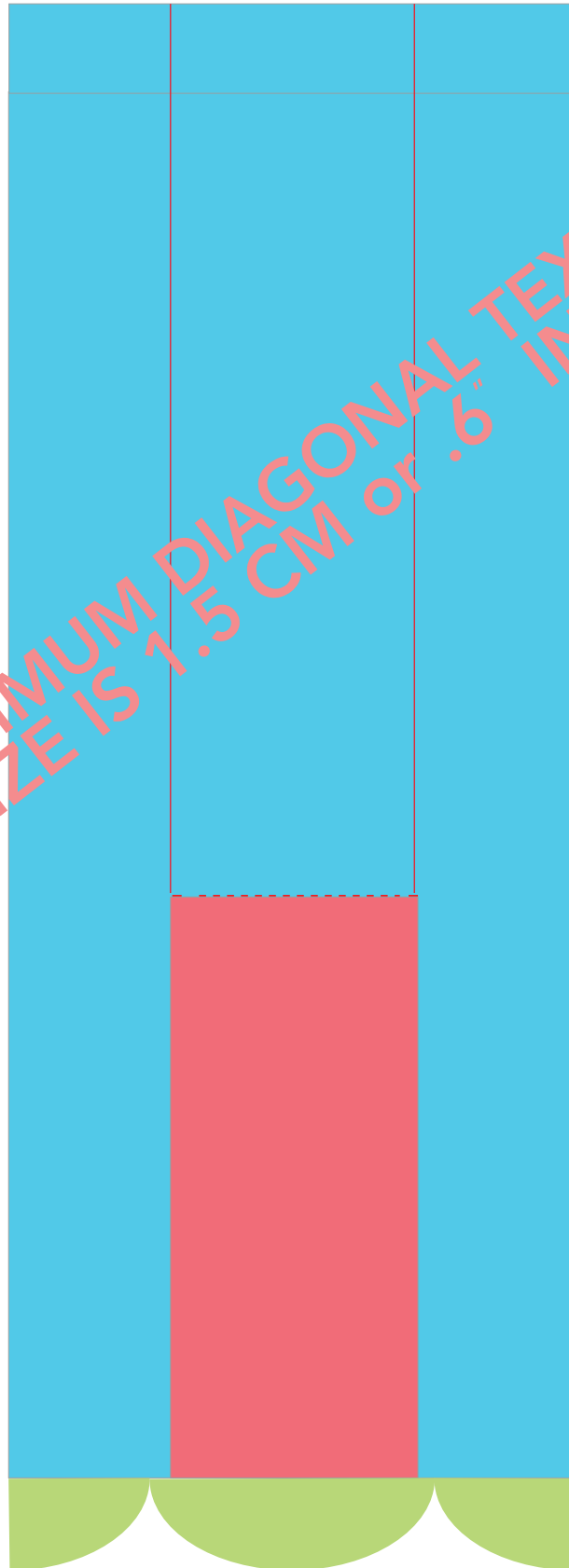
# ATHLETIC SOCKS - NON-RIBBED

## REFERENCE GUIDE

MINIMUM LINE SIZE IS .15 CM or .062" IN  
USE THESE LINES AS GUIDES



MINIMUM DIAGONAL TEXT  
SIZE IS 1.5 CM or .6" IN



# WOVEN CUFF TAG

## Artwork Layout

NOTE: ART SHOWN AT 100%

Tag Size: 0.77"W x 1.96"H

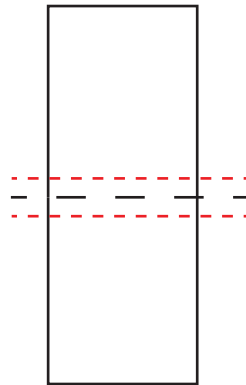
Folded at: 0.98"

**NOTE: ALL COLORS ARE CLOSEST MATCH**

Artwork must be above or below bleed line

— — — — — BLACK DOTTED LINE MARKS FOLD LINE

----- RED DOTTED LINE MARKS BLEED LINE

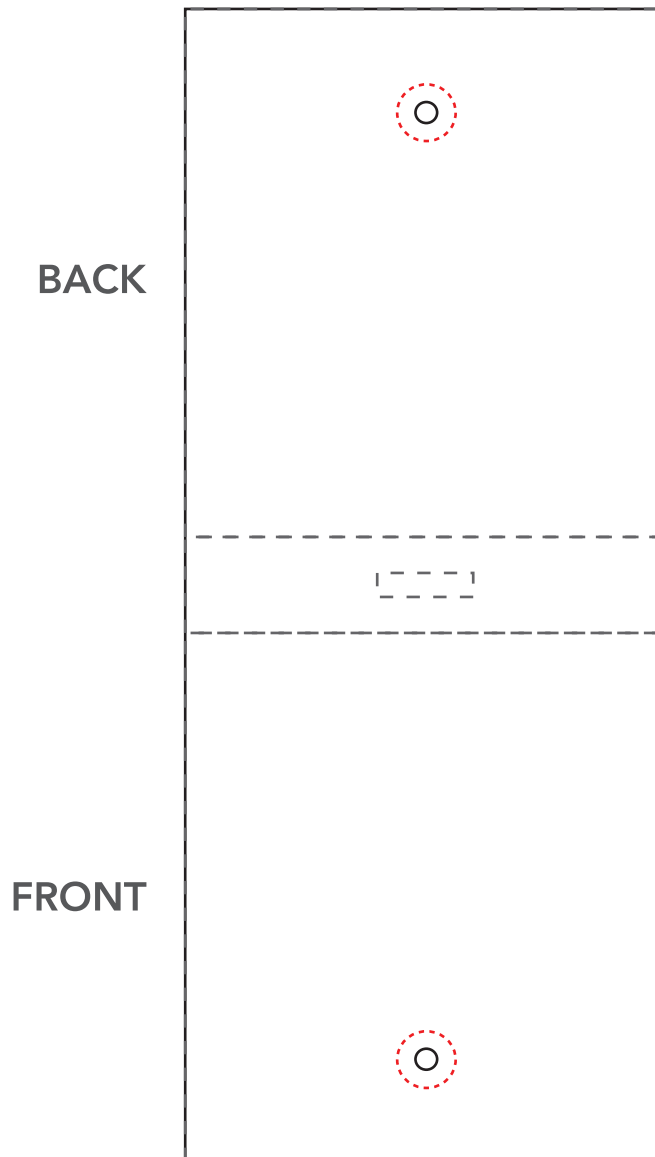


# HANG TAG

## Artwork Layout

NOTE: ART SHOWN AT 100%  
Final Dimensions: 2.5" W X 6" H

----- Hole punch margin area  
- - - - Gray line marks Fold lines  
300gsm weight

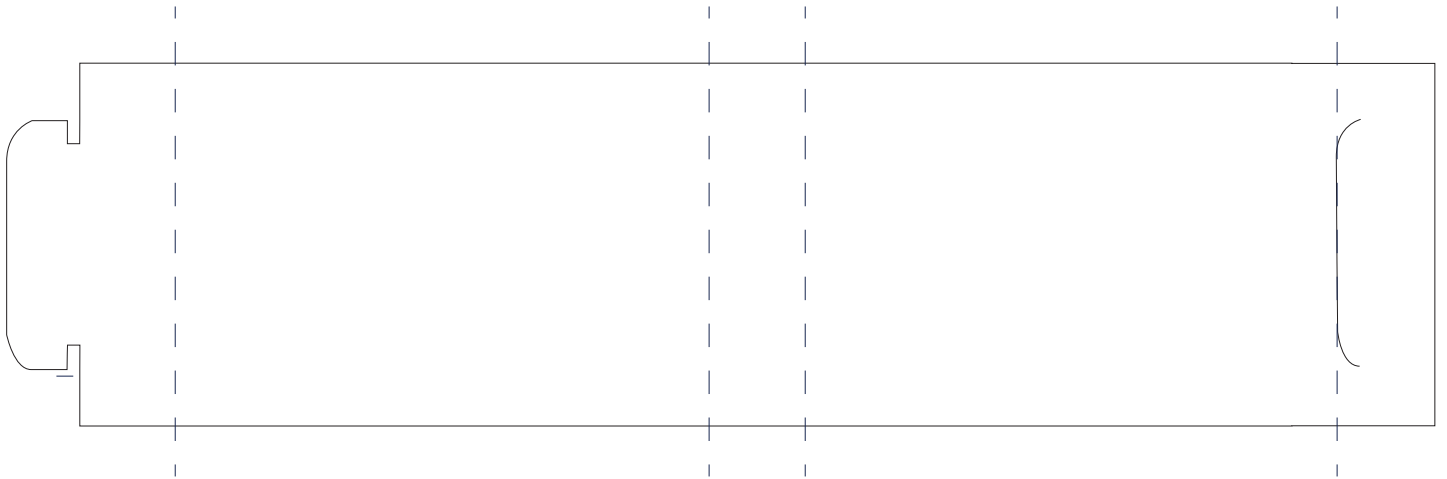


# WRAP TAG

## Artwork Layout

NOTE: ART SHOWN AT 75%

— — — BLACK DOTTED LINE MARKS FOLD LINE



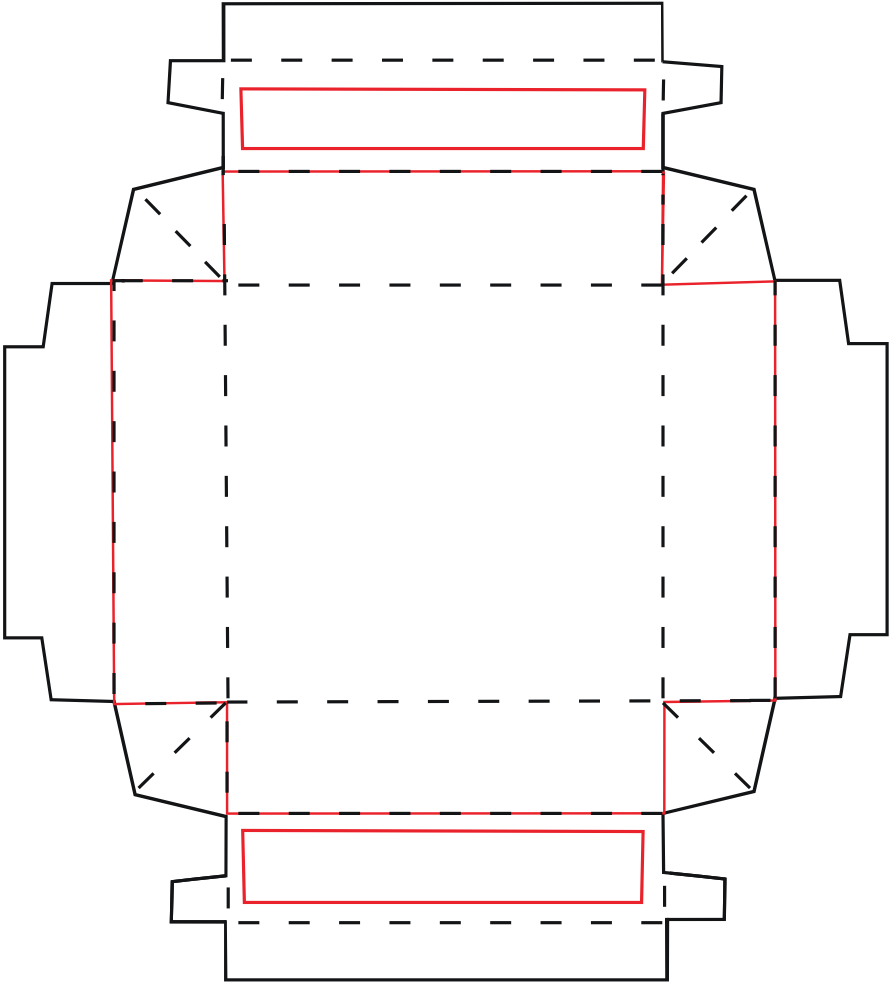


# SOCK BOX - TOP

## Artwork Layout

NOTE: ART SHOWN AT 50%

- - BLACK DOTTED LINE MARKS FOLD LINE
- SOLID RED LINE MARKS BLEED LINE

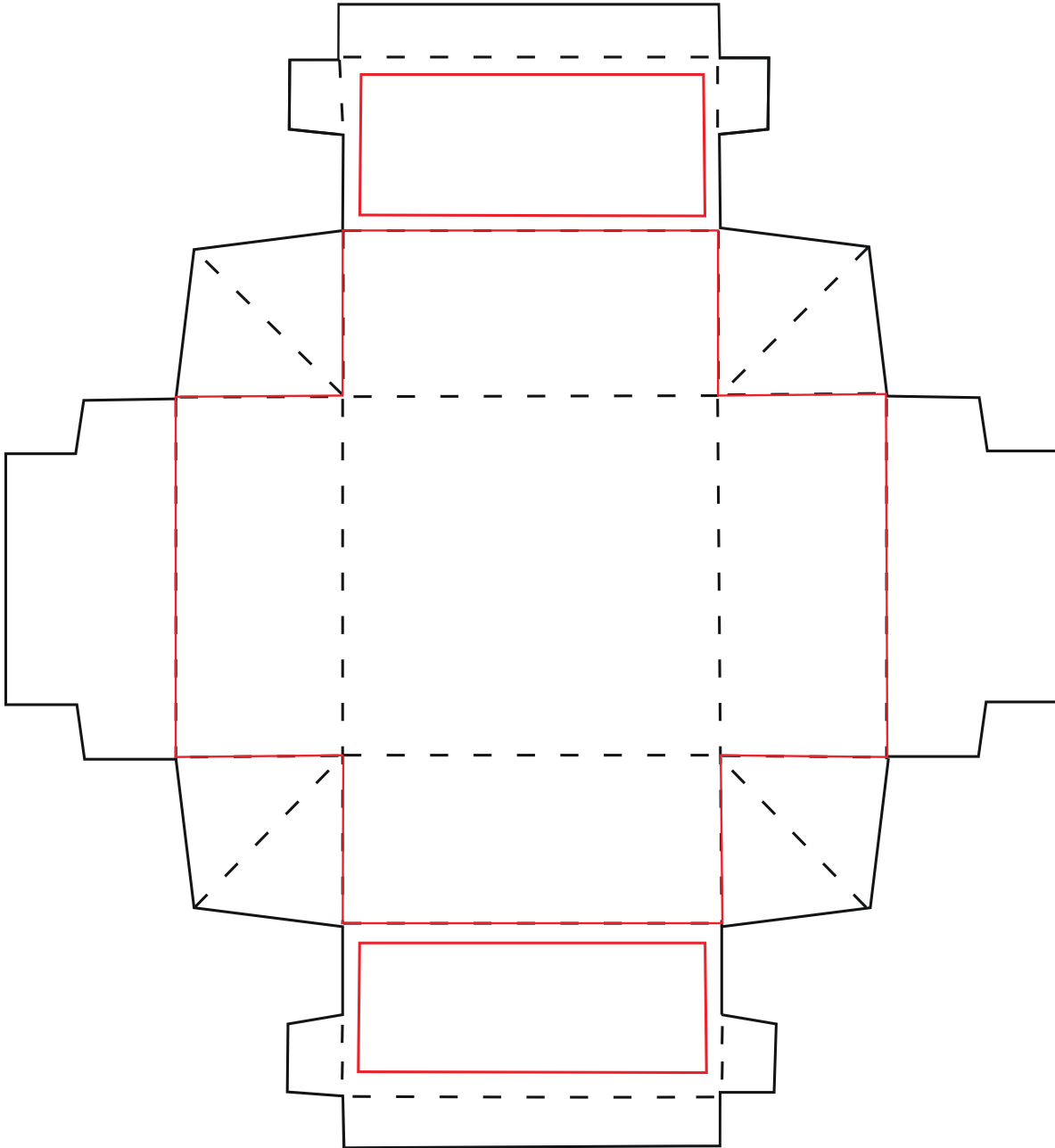


# SOCK BOX BOTTOM

## Artwork Layout

NOTE: ART SHOWN AT 50%

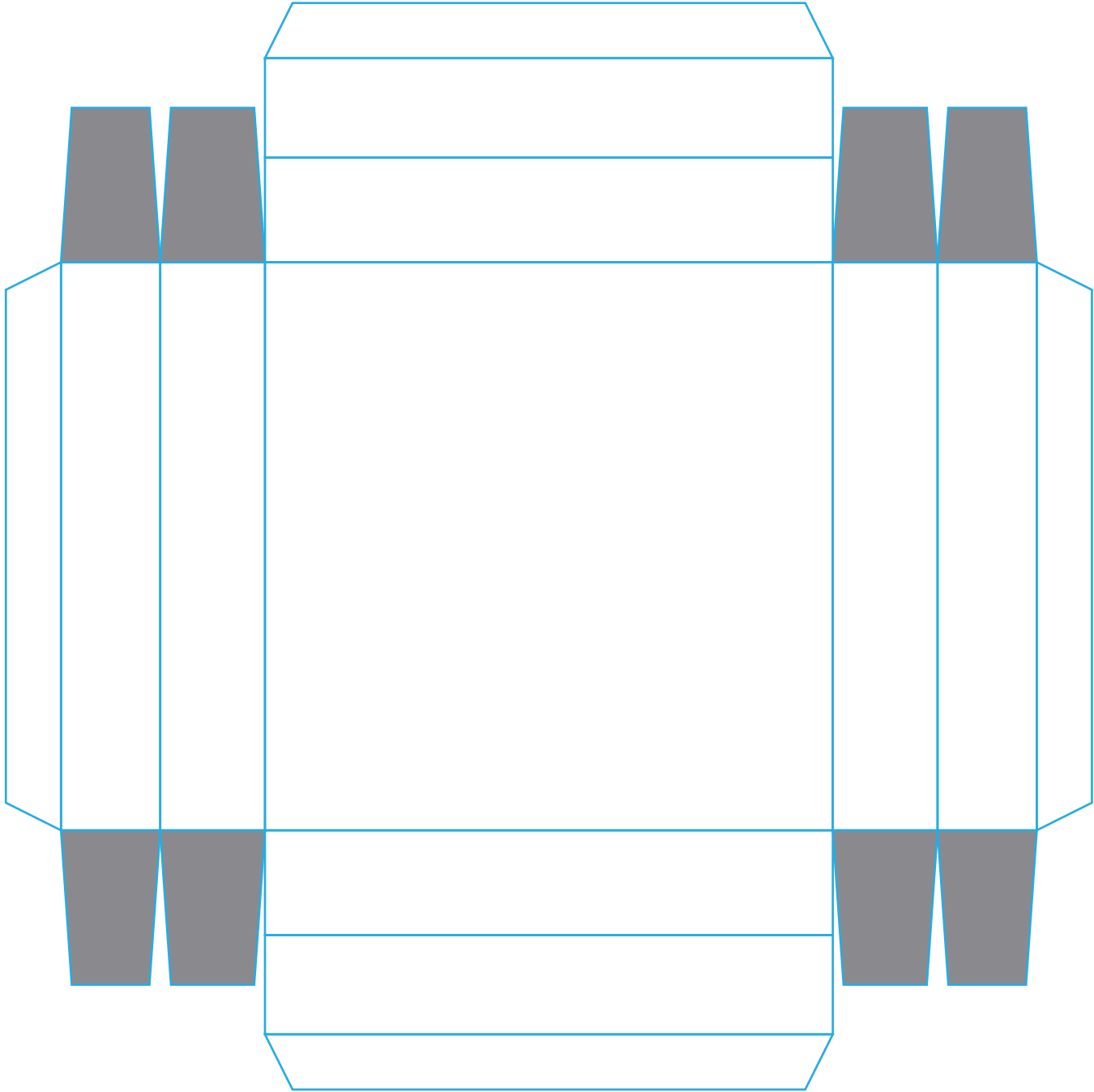
— — BLACK DOTTED LINE MARKS FOLD LINE  
— — SOLID RED LINE MARKS BLEED LINE



# SINGLE SOCK BOX - TOP

Artwork Layout

NOTE: ART SHOWN AT 100%

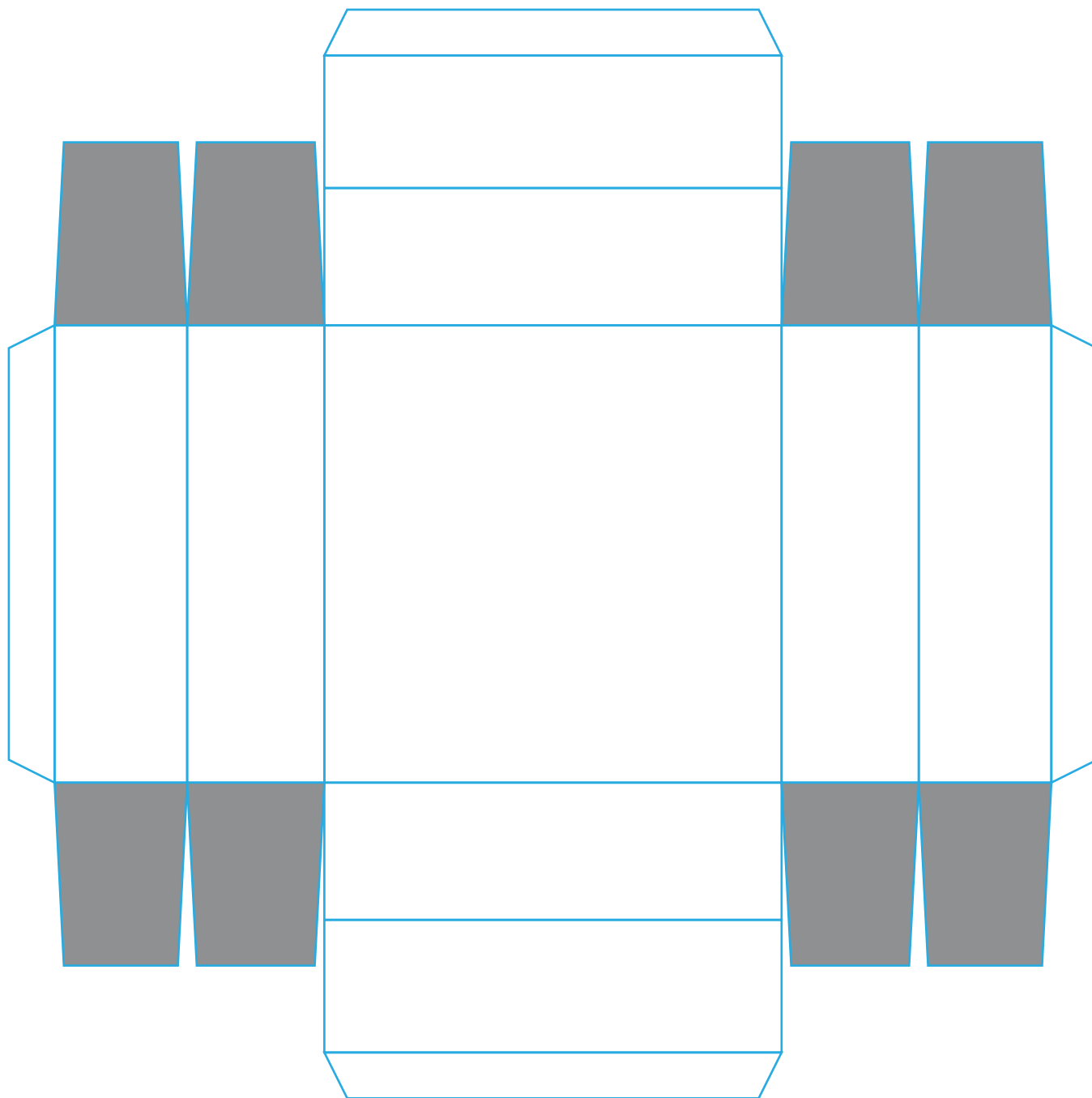


**DUE TO THE CONSTRUCTION OF THE BOX,  
AREAS IN GREY WILL NOT BE VISIBLE**

# SINGLE SOCK BOX - BOTTOM

Artwork Layout

NOTE: ART SHOWN AT 100%



**DUE TO THE CONSTRUCTION OF THE BOX,  
AREAS IN GREY WILL NOT BE VISABLE**

ASNR.20.1